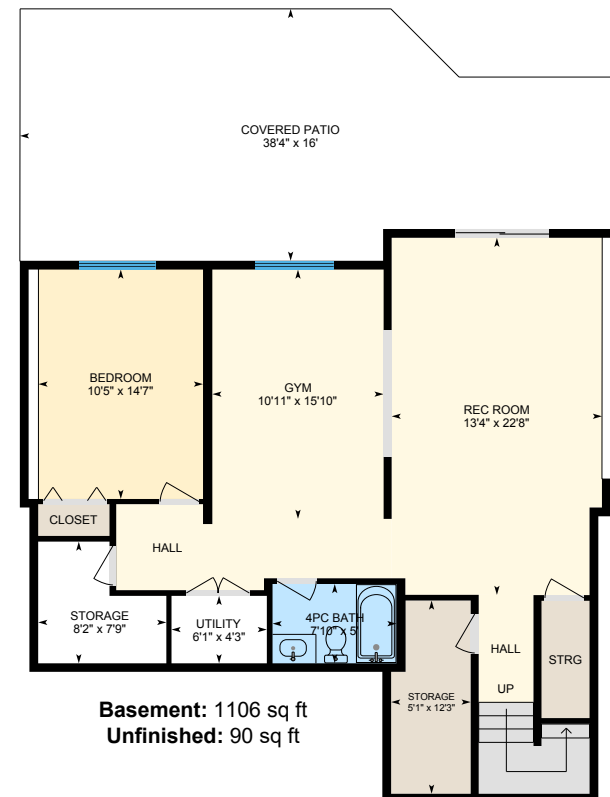
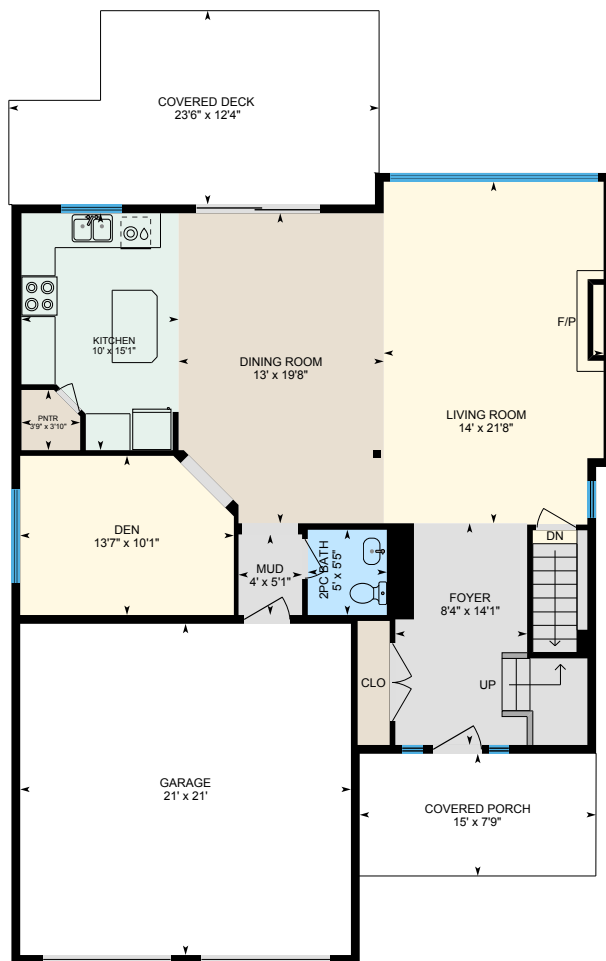


4-13887 Dockstader Loop

Maple Ridge, BC

Total:	3,560 sq ft
Main Floor	1,161 sq ft
Upper Floor	1,203 sq ft
Basement	1,106 sq ft
Unfinished	90 sq ft

Total Extras:	1,341 sq ft
Garage	442 sq ft
Covered Porch	116 sq ft
Covered Deck	256 sq ft
Covered Patio	527 sq ft



0 6 12
ft

Total square foot calculated to gross unit area. SQFT based on interior measurements to exterior walls, not taken from original blueprints, may include unfinished area. This is for marketing purposes only and is not intended for architectural/construction use. All details, sizes & placements should be considered approximate within +/- 2% tolerance.